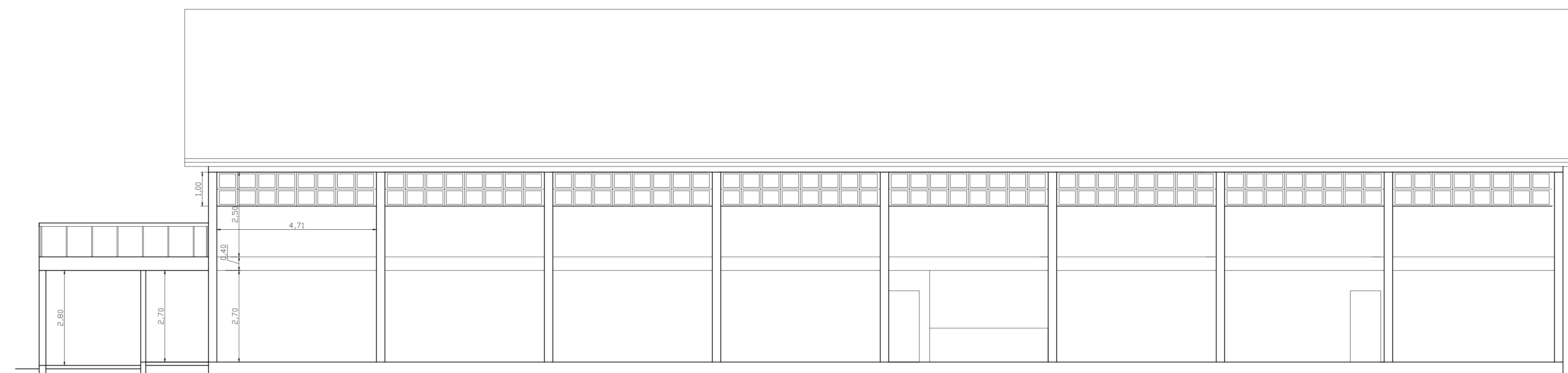
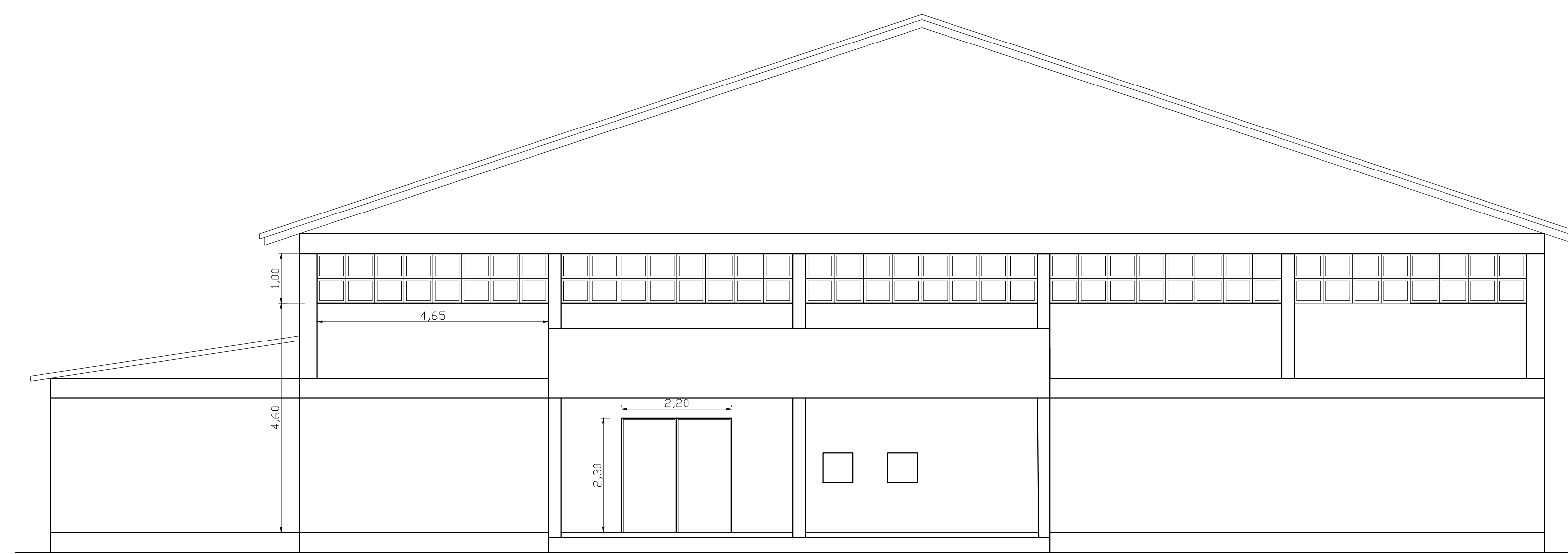


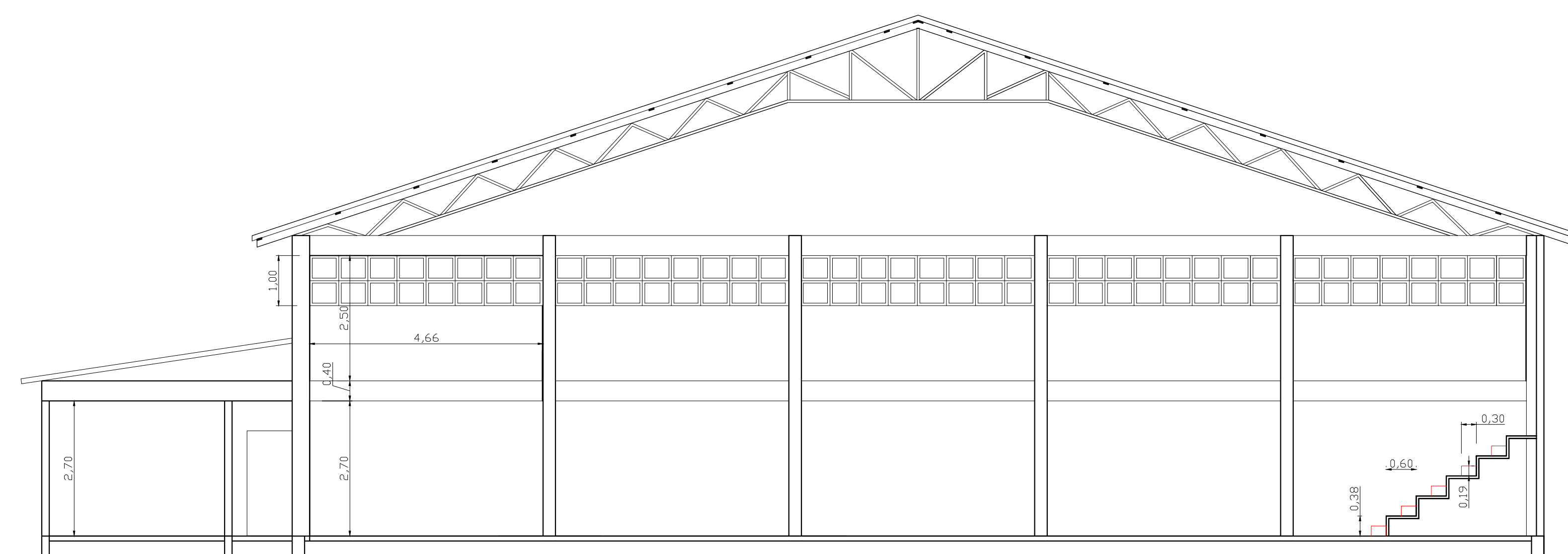
FACHADA LATERAL



CORTE BB



FACHADA PRINCIPAL



CORTE AA

<b>QUADRA ESPORTIVA</b>			
Av. Getúlio Vargas, s/nº, São José do Herval. CONTRATO Nº: 1079.345-19			
PROPRIETARIO PREFEITURA MUNICIPAL DE SÃO JOSÉ DO HERVAL			
PROJETO Felipe dos Santos Zanetti CREA-134.451	EXECUÇÃO		
<b>CORTES - FACHADAS</b>			
PRANCHA 2/4	AREA 1.151,75m2	ESCALA 1:75	DATA JAN/2022